

RAScal 4.0 Installation Instructions

After downloading “RAScal 4.0 Installer.exe,” double-click the icon to launch it.

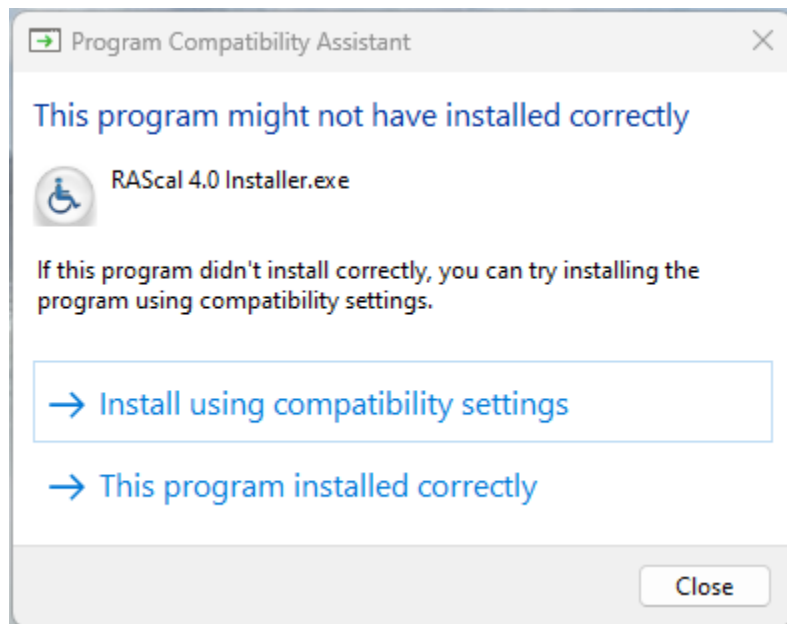
The default Install Directory is:

your home directory, e.g. “C:\users\your_name\RAScal 4.0.”

If you are currently using RAScal, it is recommended to install RAScal 4.0 in the same directory as your existing installation. You can find this in the Help/About RAScal menu item. The Install Directory is listed there. Use the Select Directory button to change the Install Directory.

Once the Install Directory is selected, click the Next button, then the Install button. Installation takes just a few seconds. Check the Create Desktop Shortcut box, then click Finish, then Done.

After the installation is complete, Windows will present this window:



Click “This program installed correctly” and you’re done.

If you have installed RAScal 4.0 in the same directory as your previous RAScal installation, RAScal 4.0 will use the same license file and all of your information as the previous version.

Note: because RAScal 4.0 supports Windows Display Scaling, if you use the Signature feature for letters and forms, you will have to re-locate your signature image. On the Contacts tab, select yourself, click the Signature button and relocate your signature image.

RAScal 4.0 New Features

TDLR Features

- RAScal 4.0 includes the 2022 TAS (**will be available when TDLR releases the new TAS**)
- Form AB043 Designated Agent (2022 version) is included.
- TDLR requires a County Appraisal District (CAD) account number for certain forms. The CAD account number is entered on the Project Dialog.

Operational Features

- RAScal's installation is streamlined. Just execute the downloaded installer program. No more extracting from a zip file. The installation time is improved to just a few seconds.
- RAScal now only supports Java 64-bit. Java's owner, Oracle, no longer supports the 32-bit version.
- Startup time is improved. RAScal now keeps a list of projects in its database file. This list is updated each time you exit RAScal. The first time you launch RAScal 4.0 this list does not exist and is generated during the initial project folder scan. For subsequent launches you will notice the improved startup time.
- RAScal now supports Windows Display Scaling. If you have a large display, RAScal 4.0 works properly with Display Scaling greater than 100%.
- A new backup strategy is implemented. All important information about the RAScal configuration is backed up in the **backup/data** directory each time you exit the program.
- Project Numbers can now be any name or number. While TABS is the default prefix, you can type any name or number into the Project Number box.
- You can customize the names of the files that RAScal uses for generated PDF forms. See the **Tools/Setup/Project Options tab**.
- RAScal's operating directory structure is simplified for new installations.

Convenience Features

- A Project Contact column was added to the Projects tab of RAScal's main window. RAScal 4.0 automatically selects the project contact (first choice: Designer; if no Designer is entered, then the Owner is selected.) You can change the Project's Contact. By default, the project contact's organization is listed. You can display the contact names by checking the Display Contact Name box in the lower left corner of the main window.
- The Project Folder can be continuously monitored for changes. When this is enabled (Tools/Setup/Project Options: Enable Project Monitor) any changes to the Projects Folder are reported. This is useful for offices where several users share the same Project Folder. You can also enable alerts when changes are detected.
- When you save a project report, it is saved to disk.
- Each project's status is updated when you create a Letter. This feature can be disabled on the (Tools/Setup/Project Options tab.) You can still update each project's status manually.
- You can edit contact information in any Contact Dialog. The read-only Dialog was removed.
- The Calendar Buttons on the various Dialogs have been removed. To select a Date, double click on the Date box.

- You no longer need to manually manipulate photograph files to reduce Report file sizes. The Report Dialog now has a Photo compression factor selector with 4 levels of compression ranging from None to High. None attaches the photo at full resolution and full file size. High compresses the photograph substantially, with some noticeable degradation in printed photo quality. You will find that the Medium setting provides the best compromise between file size and photo quality. In all cases the photographs are stored in the Project's folder at full resolution.
- Drag and Drop is implemented for signatures, attached photographs and combining PDF documents. Just drag and drop the files onto the dialog tables.
- The Combine PDFs function has been added to the Project Dialog. When you click Add PDF, the window that appears is looking in that Project's folder.